

Simplify Your Life With The Grade Sheet

Imagine never having to talk to students again about what grades, or reminding them what they're missing. If that seems unrealistic, think again. This Grade Sheet will get your students keeping track of their own grade. It will greatly simplify your life and theirs, and cause many other benefits that we'll get to in a bit. But first, here's how it works.

How It Works

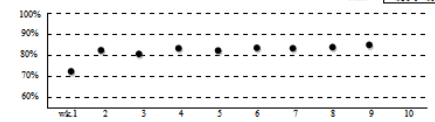
Think of the Grade Sheet as a simple spread sheet, or page filled with lines. Students record their assignments on the lines, add up their points, and divide by the total possible to get their grade.

The Grade Board

In case you're wondering exactly how students know what to write on the lines, that's where the Grade Board comes in. The Grade Board is a poster board you've made at the front of your classroom with lines on it that looks just like the student Grade Sheet. On it you record the order and description of assignments. All students have to do is to copy everything on it onto their Grade Sheet. Page 6 explains how to make a Grade Board.

Example: Let's say it's the first day of the grading period and you are giving a test worth 35 points. On line 1 of the Grade Board you fill in the particulars for this assignment: the due date, description, and points possible. Students copy this onto their Grade Sheet. When you hand back the test the next day, students fill in what they "Earned" and their "Total". Dividing those 2 "Total" numbers (your total and the class total) gives the current grade. As days and weeks pass, more assignments and tests occur, more lines fill, and the Total keeps increasing.

Date	Assignment	Earned	Possible	Total	%	
1	Ch. 15 test	16	35	16 / 35	68%	
2	Next tekona worksheet-ch. 16	10	10	26 / 35	75%	
3	Folder	10	10	36 / 35	81%	
4	1/10-October 3/10	10	10	46 / 35	87%	
5	Phases-DNA	10	10	56 / 35	87%	
6	Class-introduction & DNA	4	10	60 / 35	80%	
7	Lab-plant tissue	10	10	70 / 35	80%	
8	Folder	10	10	80 / 35	80%	
9	Questions-Abiomas your DNA	8	10	88 / 35	80%	
10	Open reports	10	10	98 / 35	80%	
11	Resolution Internet	4	5	102 / 35	80%	
12	Worksheet-ch. 17	10	10	112 / 35	80%	
13	Folder	10	10	122 / 35	80%	
14	Test-ch. 17	15	25	137 / 35	81%	
15	Biomas report	10	10	147 / 35	81%	
16	Next tekona worksheet-ch. 18	10	10	157 / 35	81%	
17	Folder	10	10	167 / 35	81%	
18	Lab-feeding pond and water	10	10	177 / 35	81%	
19	Test-biomas	15	20	192 / 35	85%	
20	Worksheet-ch. 10	10	10	202 / 35	85%	
21	Folder	0	10	202 / 35	81%	
22	Lab-water hardness	10	10	212 / 35	85%	
23	Worksheet-10	10	10	222 / 35	85%	
24	Worksheet-questions	10	10	232 / 35	85%	
25	Folder	10	10	242 / 35	85%	
26	Test-ch. 20	18	20	260 / 35	85%	
27	Ch. 21 assignment	10	10	270 / 35	85%	
28	Folder	10	10	280 / 35	87%	
29	Lab-pond rain	10	10	290 / 35	87%	
30						
31						
32						
33						
34						
35						
36						
				Final	297 / 375	87%



1.	3/25	ch. 15 test	35 / 35
2.			
3.			
4.			
5.			
6.			
7.			
8.			
9.			

	Date	Assignment	Eamed	Possible	Total	%
1	3/25	Ch. 15 test	24	35	24 / 35	68%
2						
3						